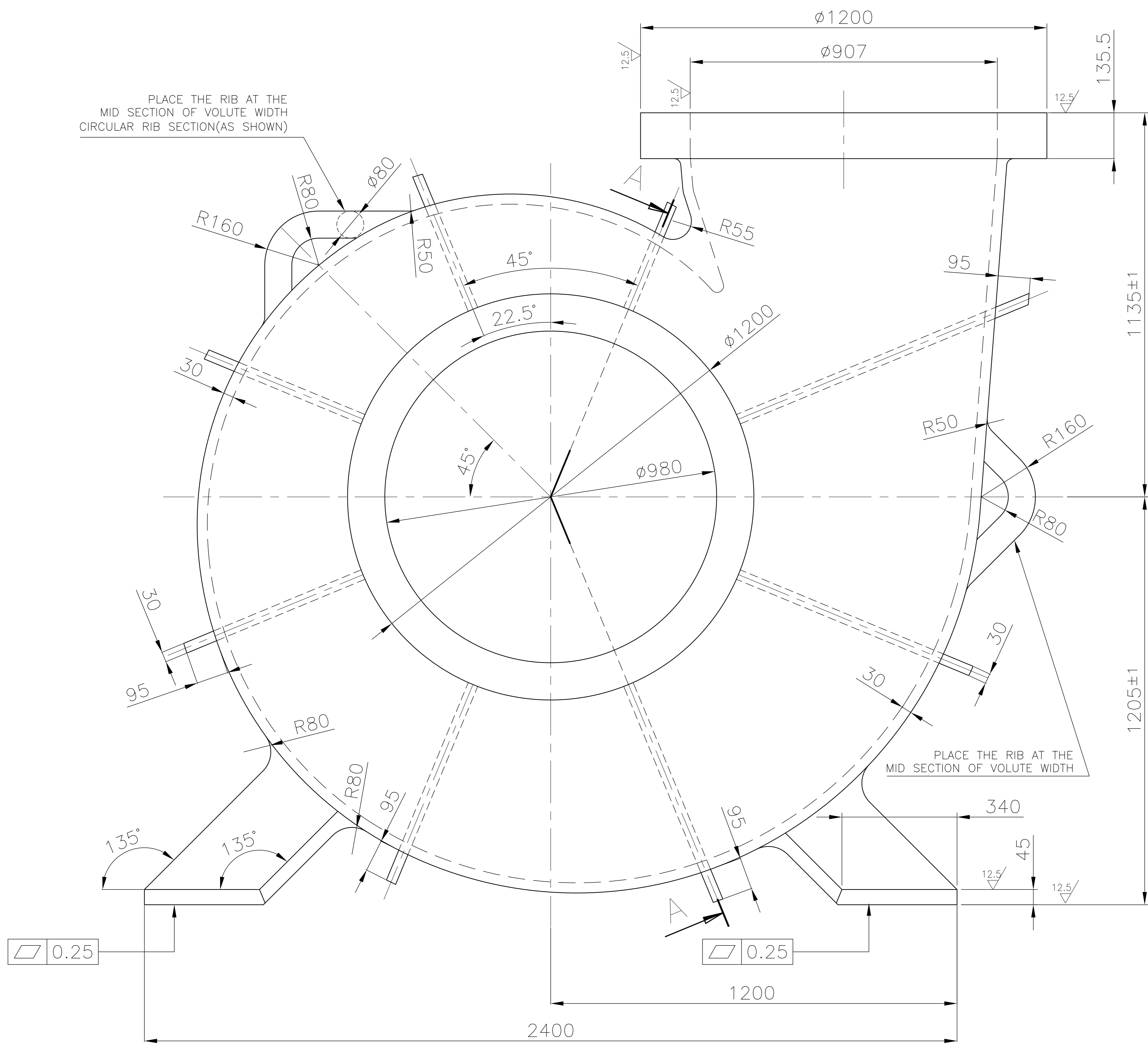


PLACE THE RIB AT THE MID SECTION OF VOLUTE WIDTH  
CIRCULAR RIB SECTION (AS SHOWN)



0.25

0.25

NOTE TO SUPPLIER

- CASING CASTING FLOW PASSAGES SHALL HAVE A MIN. SURFACE FINISH OF 5 MICRONS. REST OF THE SURFACES OTHER THAN THOSE SPECIFIED CAN HAVE UPTO 50 MICRON FINISH.
- AS CAST CASING CASTING WILL BE INSPECTED BY BHEL PRIOR TO DISPATCH.
- FOR HYDRAULIC PROFILE, REFER 01835020027-00, T.D.C AS PER SPEC. FP50717

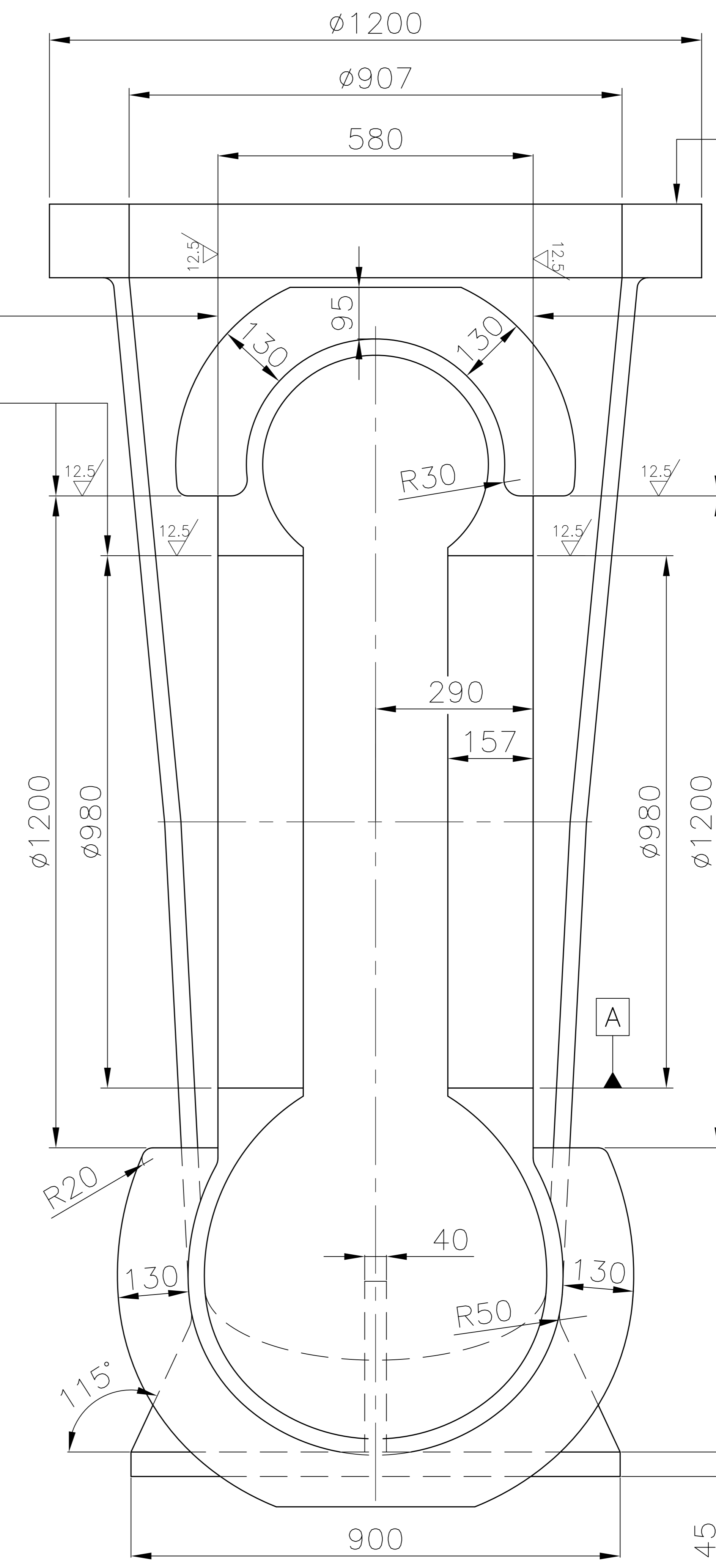
0.25 A

0.25 A

0.25

0.25 A

0.25 A



SECTION-AA

01					FP9750717015	3760	
					FP50717		01
ITEM NO.	DESCRIPTION	DRAWING NO.	VAR. NO.	RAW MATERIAL SIZE OR CASTING DRG.NO. OR FORGING DRG.NO.	MATERIAL CODE	NET WT.	GROSS WT.
					MATERIAL SPECN.	QUANTITY	

THE FOLLOWING CONDITIONS APPLY EXCEPT OTHERWISE STATED...

- REF. TO HY0230261 FOR UNSPECIFIED TOLERANCES.
- CHAMFER M/CD SHARP EDGES 1.2 TO 1.0 AT 45°.
- INTERNAL M/CD CORNER RADII 1 TO 0.7.
- THE SURFACE ROUGHNESS WHEREVER NOT SHOWN SHALL BE TAKEN FROM THE SURFACE ROUGHNESS SHOWN OUT SIDE BACK SLASHES GIVEN AT THE TOP MOST RIGHT CORNER OF THE DRG.

TYPE OF PRODUCT OR NAME OF CUSTOMER/PROJECT				VOLUTE CASING			
BHARAT HEAVY ELECTRICALS LIMITED HYDERABAD				NAME: ASK SIGN: -sd- DATE: 13.07.20 NO. OF VAR.: 01			
DEPT. PUMPS	SCALE N.T.S	WEIGHT (KG) 3760	REF. TO ASSY DRG. -NA-	ITEM NO. -NA-	NO. OF ITEMS -NA-		
TITLE CASING CASTING DRAWING				DRAWING NO. 0 183 50 2 0026		REV. 00	
				SHEET NO.		NO OF SHEETS	

THE INFORMATION ON THIS DOCUMENT IS THE PROPERTY OF BHARAT HEAVY ELECTRICALS LIMITED. IT MUST NOT BE USED DIRECTLY OR INDIRECTLY IN ANY WAY DETRIMENTAL TO THE INTEREST OF THE COMPANY.

INVENTORY NO. SIGN. AND DATE REF. DRG. NO. COMPUTER FILE NAME:

REV.	DATE	ALTERED CHECKED	APPD.	REV.	DATE	ALTERED CHECKED	APPD.	REV.	DATE	ALTERED CHECKED	APPD.	REV.	DATE	ALTERED CHECKED	APPD.	REV.	DATE	ALTERED CHECKED	APPD.	REV.	DATE	ALTERED CHECKED	APPD.
ZONE				ZONE				ZONE				ZONE				ZONE				ZONE			